



49 Petherton Gardens, Bristol, BS14 9BT

£315,000

This two-bedroom semi-detached bungalow is for sale in a cul-de-sac location in Bristol, offering a practical layout and convenient access to local amenities and public transport.

The property features a separate reception room and a kitchen with dining space, providing defined areas for everyday living and mealtimes. Both bedrooms are doubles, and there is a shower room. The bungalow benefits from gas central heating and an EPC rating of C, as well as council tax band C.

Externally, there is a double driveway providing parking for up to three vehicles. To the rear is a good-size, level, south-facing garden, offering usable outdoor space with plenty of natural light throughout the day.

The bungalow is situated within reach of local shops, services and everyday amenities in this part of Bristol, including supermarkets, cafés and healthcare facilities. Nearby green spaces provide opportunities for walking and recreation.

Entrance Hall



Conservatory

12'0" x 9'10" (3.67 x 3.00)



Sitting Room

13'3" x 11'2" max (4.04 x 3.41 max)



Bedroom One

12'6" x 11'2" (3.83 x 3.41)



Kitchen / Diner

14'7" x 10'0" (4.46 x 3.07)



Bedroom Two

10'8" x 10'0" (3.27 x 3.05)



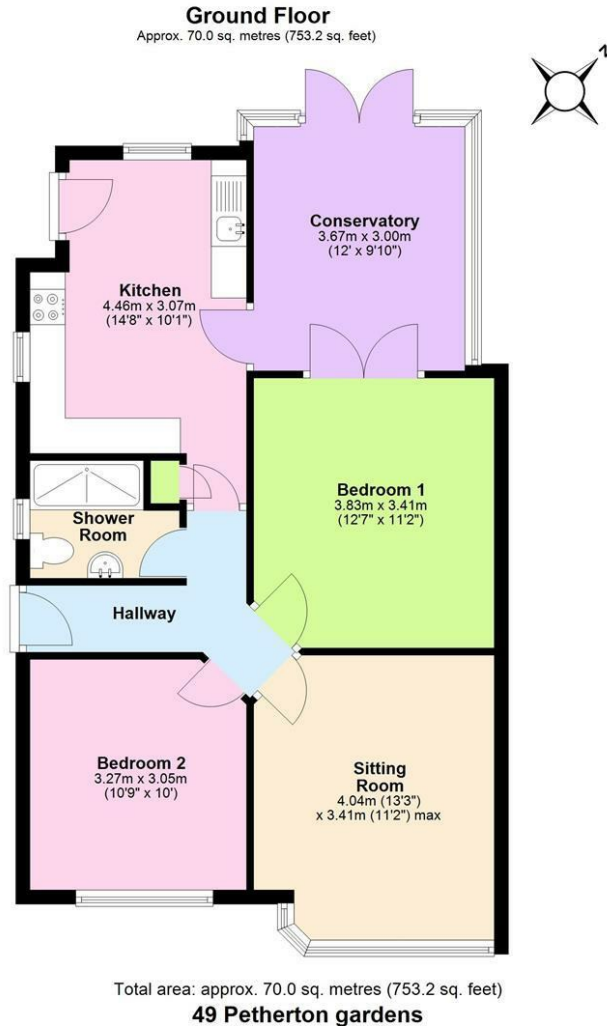
Shower Room



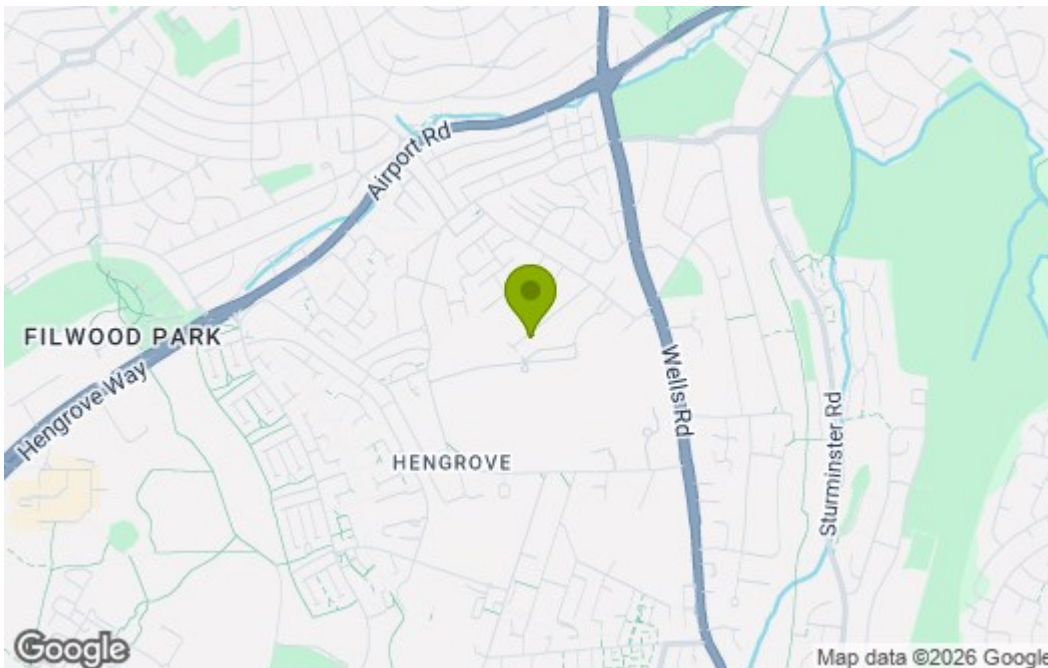
Outside



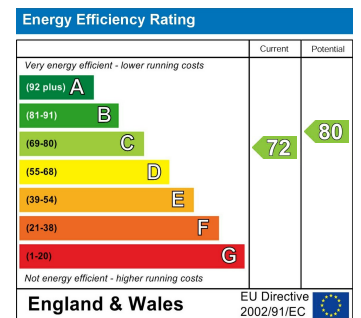
Floor Plan



Area Map



Energy Efficiency Graph



These particulars, whilst believed to be accurate are set out as a general outline only for guidance and do not constitute any part of an offer or contract. Intending purchasers should not rely on them as statements of representation of fact, but must satisfy themselves by inspection or otherwise as to their accuracy. No person in this firm's employment has the authority to make or give any representation or warranty in respect of the property.